

BIG BIKE PARTS® INSTALLATION INSTRUCTIONS

Copyright© 2005 by Big Bike Parts, Inc. No part of this instruction sheet may be reproduced without the written permission of Big Bike Parts, Inc.

RALLY BRUSH GUARDS

UNIVERSAL

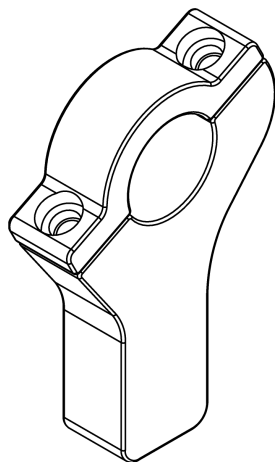
PART NO. 59-201

PART NO. 59-202

ITEMS REQUIRED: 4MM ALLEN WRENCH, 5MM ALLEN WRENCH, KNIFE

NOTE: FOR ATV'S WITH BOLTS IN THE END OF THE HANDLEBARS, THE COMPRESSION NUTS, RUBBER SLEEVES, COMPRESSION SPACERS, ALUMINUM SPACERS, AND M8 X 1.25 X 80MM BOLTS WILL NOT BE USED. USE THE STOCK BOLT TO FASTEN THE BRUSH GUARD TO THE END OF THE HANDLEBAR.

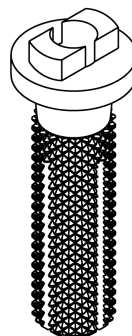
1. TAKE ANY MOLDINGS AND COVERINGS THAT MAY BE ON THE HANDLEBARS OFF TO EXPOSE THE BAR SO THE CLAMPS CAN BE BOLTED ON.
2. IF YOUR ATV HAS STOCK BOLTS IN THE ENDS OF THE HANDLEBARS, USE THEM TO BOLT THE END OF THE BRUSH GUARDS WITH THE COUNTER SUNK HOLE TO THE HANDLEBARS. THERE IS A LEFT AND A RIGHT. THE SLOTS IN THE PLASTIC OF THE BRUSH GUARDS SHOULD BE ON TOP. DO NOT FULLY TIGHTEN AT THIS TIME.
3. IF YOUR ATV HAS OPEN-ENDED HANDLEBARS, USE A SMALL KNIFE TO CUT A HOLE IN THE END OF EACH GRIP TO EXPOSE THE ENDS OF THE HANDLEBARS.
4. SLIDE THE ALUMINUM SPACERS OVER THE COMPRESSION SPACER. INSERT THE COMPRESSION SPACER INTO THE RUBBER SLEEVE UNTIL THE RUBBER SLEEVE COMES IN CONTACT WITH THE ALUMINUM SPACER. INSERT THE 80MM BOLT THROUGH THE COUNTER SUNK HOLE IN THE BRUSH GUARD, THEN THROUGH THE COMPRESSION SPACER. THE BOLT IS INSERTED INTO THE END WITH SHOULDER (END WITH THE ALUMINUM SPACER). THE RAISED KEY ON THE COMPRESSION SLEEVE IS INSERTED INTO THE SLOT ON THE BACKSIDE OF THE BRUSH GUARDS.
5. THREAD THE NUT ONTO THE BOLT STARTING WITH THE END WITH THE TWO EARS. THE EARS ON THE NUT WILL SLIDE INTO THE SLITS IN THE COMPRESSION SLEEVE.
6. ONCE THE NUT IS THREADED ON ENOUGH THAT THE EARS OF THE NUT ARE IN THE SLITS OF THE COMPRESSION SLEEVE, INSERT THE ENTIRE ASSEMBLY INTO THE END OF THE HANDLEBARS. THERE IS A RIGHT AND LEFT BRUSH GUARD SO ASSEMBLY THEM TO THE MACHINE WITH THE SLOTS IN THE PLASTIC OF THE BRUSH GUARD ON TOP. DO NOT FULLY TIGHTEN AT THIS TIME.
7. TAKE THE CLAMPS AND A 4MM ALLEN WRENCH AND REMOVE THE TWO BOLTS HOLDING THE CLAMP TOGETHER. USE A 5MM ALLEN WRENCH TO REMOVE THE SCREW FROM THE TOP OF THE CLAMP.
8. PLACE THE CLAMPS AROUND THE HANDLEBARS, ONE ON EACH SIDE WITH THE CLAMP FACING FORWARD. USE THE BRUSH GUARD AS A GUIDE TO ENSURE THAT THE CLAMPS ARE POSITIONED CORRECTLY. THE HOLE IN THE END OF THE CLAMP WILL ALIGN WITH THE LONG SLOT IN THE BRUSH GUARD. ATTACH THE CLAMPS (ONE EACH SIDE) TO THE HANDLEBARS USING THE 14MM LONG SOCKET HEAD CAP SCREWS REMOVED IN THE PREVIOUS STEP. DO NOT FULLY TIGHTEN.
9. INSERT THE 20MM BUTTON HEAD SOCKET CAP SCREW THROUGH EACH OF THE LONG SLOTS IN THE TWO BRUSH GUARDS AND THEN INTO THE TOP OF THE CLAMPS. DO NOT FULLY TIGHTEN.
10. WITH ALL THE HARDWARE IN PLACE BUT NOT FULLY TIGHTEN, POSITION THE BRUSH GUARDS AS DESIRED. THE BRUSH GUARDS SHOULD BE POSITIONED SO THAT THE LEVERS ARE APPROXIMATELY IN THE CENTER OF THE BRUSH GUARD.
11. WHEN THE BRUSH GUARDS ARE POSITIONED AS DESIRED, TIGHTEN ALL FASTENERS ON BOTH SIDES. REPLACE ANY MOLDINGS AND COVERINGS THAT WERE REMOVED IN THE FIRST STEP.



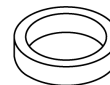
TWO PIECE HANDLEBAR CLAMP



RUBBER SLEEVE



KNURLED COMPRESSION SPACER



SPACER



COMPRESSION NUT