



# INSTALLATION INSTRUCTIONS

## Embark on Your Journey with Confidence.

These instructions are for both riders and dealers – written as a step-by-step guide with an eye for detail, just like our products. It's all part of your experience with Show Chrome, and we take that seriously.

Please review the instructions before diving in, and if things get uncomfortable, don't hesitate. Reach out to us. We're here to help and offer direct, human customer service based in Rice Lake, WI, USA – every time at 888-244-2453. Ride safely, and ride often.

### Here's what's in the box:

17-455RD PACKAGE OF CONTENTS SHOWN



### Final Product:

17-455RD SHOWN



17-455BK SHOWN



**Product: COMBAT HANDLEBAR GRIPS**

**Part # 17-455BK, 17-455RD**

**INSTALLATION TIME: 20 - 30 MIN**

**Fitment: CAN-AM RYKER 2019 +**

TOOLS NEEDED:	T-30 TORX	T-25 TORX	4MM ALLEN WRENCH	3MM ALLEN WRENCH	SOAPY WATER
	RUBBING ALCOHOL	CLEAN RAG			
INCLUDED:	COMBAT HANDLEBAR GRIP (2X)	THROTTLE TUBE (1X)	GLUE (1X)		

## INSTRUCTIONS:

1. Starting from the right side, loosen the bolt holding the mirror at the outside portion of the handlebar with a T-30 TORX as shown in **FIG. 1**.
  - a) Press the bolt in to release the nut and pull the right mirror towards the outside to remove the mirror from the Ryker. See **FIG. 1**. (Set the mirror aside on a soft, clean surface to avoid scratching).
  - **NOTE:** If you have previously installed the Show Chrome Handlebar End Weights (**41-410**), you will use a 4MM ALLEN WRENCH for this step.
  - **Rally/Sport Only:** Remove the four bolts holding the right handguard using a 3MM ALLEN WRENCH. See **FIG. 2**.
2. Repeat step 1 on the left side of the Ryker to correspondingly remove the left mirror.
  - **Rally/Sport Only:** Also remove the left handguard.
3. Locate the Multifunction Switch Assembly on the right side of the Ryker handlebar (labeled in **FIG. 3**).
  - a) Next, remove the three screws holding the Multifunction Switch Assembly together using a T-25 TORX. See **FIG. 3**.
  - **NOTE:** You will be reusing the screws, so set them aside for now, but note where they are.
4. Carefully separate the rear of the Multifunction Switch Assembly and move it out of the way from the throttle. See **FIG. 4**.
  - **NOTE:** Do not stress the wires or other components inside the assembly, as you might accidentally unplug a connector or cause damage, leading to electrical issues.
5. You are about to remove the right grip and throttle tube. It's important that you take note of where the tab on the throttle tube aligns with the Multifunction Switch Assembly when you remove the throttle tube. In a later step, it will be helpful to remember this.
  - a) You will remove the right grip and throttle tube together by pulling the grip straight out from the Multifunction Switch Assembly. Make sure you note the orientation of the throttle tube end. See **FIG. 4** for a visual.
6. Locate in your package the THROTTLE TUBE and one of the COMBAT HANDLEBAR GRIPS.
  - **NOTE:** When installing the COMBAT HANDLEBAR GRIPS, you may orientate them to whatever position you desire for your preferred look. Always verify that both sides match each other for the best aesthetic.
  - a) Next, utilizing soapy water as a lubricant, slide the THROTTLE TUBE inside the COMBAT HANDLEBAR GRIP.
7. Clean the exposed handlebar with rubbing alcohol and a clean rag; let dry completely before continuing.
8. With the THROTTLE TUBE installed to the COMBAT HANDLEBAR GRIP, slide it onto the Ryker. Be sure to correctly orient the new THROTTLE TUBE end so it lines up with the tab inside the Multifunctional Switch Assembly, similar to the positioning that the stock OEM throttle tube had. See **FIG. 5**.
  - **NOTE:** You will not be finished with this step until you confirm that the throttle grip is properly engaged with the Multifunction Switch Assembly tab. In other words, when you twist the throttle towards you (as if you were accelerating) and then release; the throttle should naturally rebound back into the resting idle position.
9. Repeat steps 4 and 5 in reverse order to reassemble the Multifunction Switch Assembly. When reassembling the Multifunction Switch Assembly, you want to line up the tab on the multifunction switch with the hole in the handlebar, just as indicated in **FIG. 6**.
  - **NOTE:** When some riders reassemble the Multifunction Switch Assembly, they accidentally leave out the rubber cover that insulates the Multifunction Switch Assembly. We've highlighted what this mistake looks like in **FIG. 7** for your reference so that you can avoid it.
10. Now, from the left side of handlebar, remove the left stock OEM grip by sliding it off the end of the handlebar. See **FIG. 8**.
  - **NOTE:** You will be required to pull outwards with lots of strength; it eases the process by twisting the grip back and forth as you pull it outwards to remove it from the handlebar.

11. Clean the left handlebar with rubbing alcohol and let dry completely. See **FIG. 9** for a visual. Before continuing, decide if you want to install the left COMBAT HANDLEBAR GRIP so it's removable or permanent. Go to step 12 to install your COMBAT HANDLEBAR GRIP so it's removable. Go to step 13 to install your COMBAT HANDLEBAR GRIP permanently.
12. **(REMOVABLE ONLY)** Grab the other COMBAT HANDLEBAR GRIP from your package. Using SOAPY WATER as a lubricant, slide the grip into position on the handlebar (you may spray SOAPY WATER on the handlebar or to the COMBAT HANDLE BAR GRIP), making a slight back and forth movement as you slide it on. Match the look of the left grip to the right grip from step 8.
  - **NOTE:** Be sure COMBAT HANDLEBAR GRIP is installed all the way so that mirrors (and handguards on Rally/Sport) will fit in place. Approximately two Quarter coins of clearance is standard, which is the thickness of 1/8th of an inch on each side.
13. **(PERMANENT ONLY)** Grab the other COMBAT HANDLEBAR GRIP and the GLUE container from your package. There are a couple of essential NOTES to consider BEFORE you apply any GLUE to your handlebar:
  - **NOTE:** Review **FIG. 10** to identify the portion of the handlebar where you will apply the GLUE. It is essential that you only use the GLUE for this portion of the handlebar.
  - **NOTE:** Once you apply GLUE to the handlebar, you will want to install the grip ASAP, as the GLUE will set very quickly. You will only have one shot at this, so you must match the look of the left COMBAT HANDLEBAR GRIP to the right COMBAT HANDLEBAR GRIP from Step 8.
    - a) When ready, you can apply a swirl of GLUE to the targeted area on the handlebar as indicated in **FIG.10**. Use the GLUE as a lubricant and slide the COMBAT HANDLEBAR GRIP into position on the handlebar to match the look of the right COMBAT HANDLEBAR GRIP from Step 8.
  - **NOTE:** Be sure COMBAT HANDLEBAR GRIP is installed all the way so that mirrors (and handguards on Rally/Sport) will fit in place. Approximately two Quarter coins of clearance is standard, which is the thickness of 1/8th of an inch on each side.
14. Repeat step 1 in reverse order on both sides of the Ryker to install mirrors
  - **Rally/Sport Only:** Install handguards too, following step 1 in reverse order.
  - **NOTE:** Do not over-tighten the mirror bolt.

FIG. 1

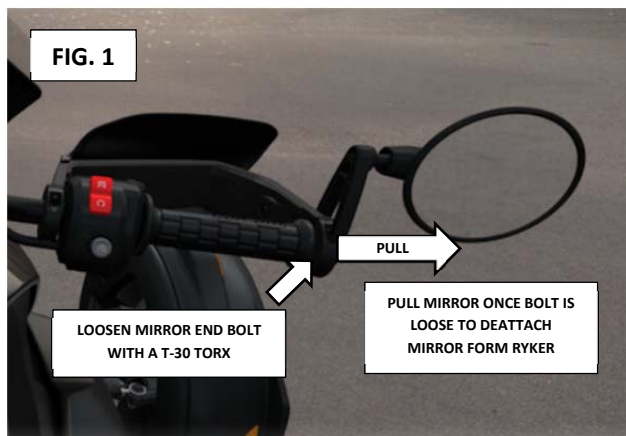


FIG. 2

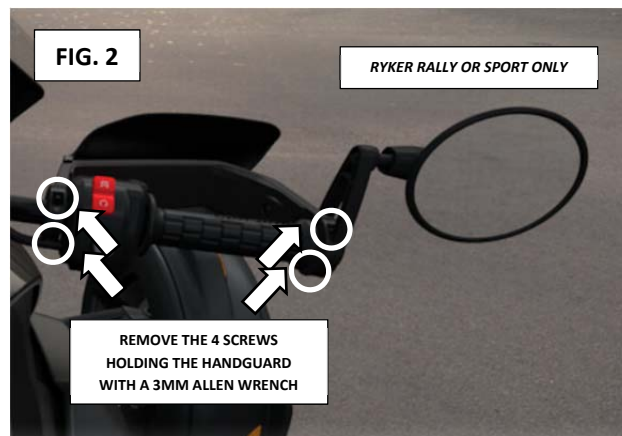


FIG. 3

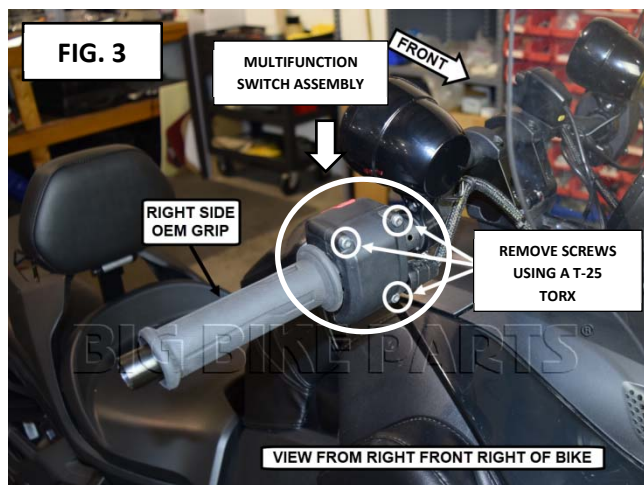


FIG. 4

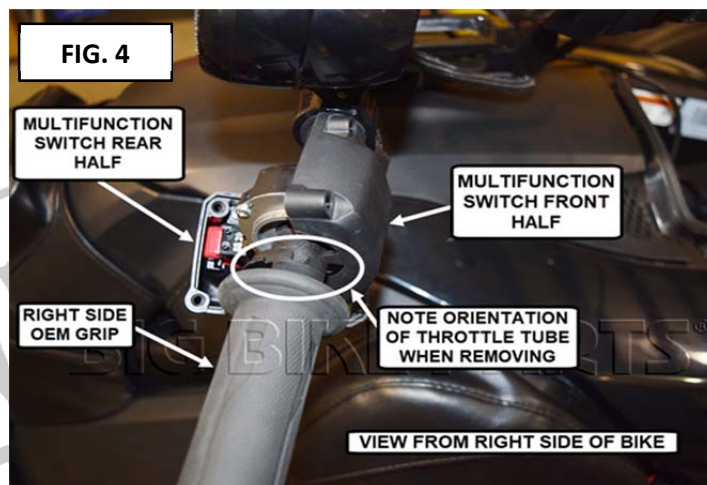


FIG. 5

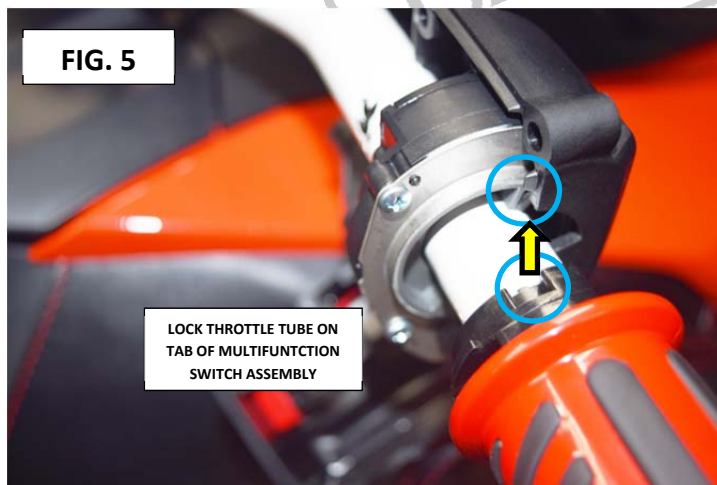
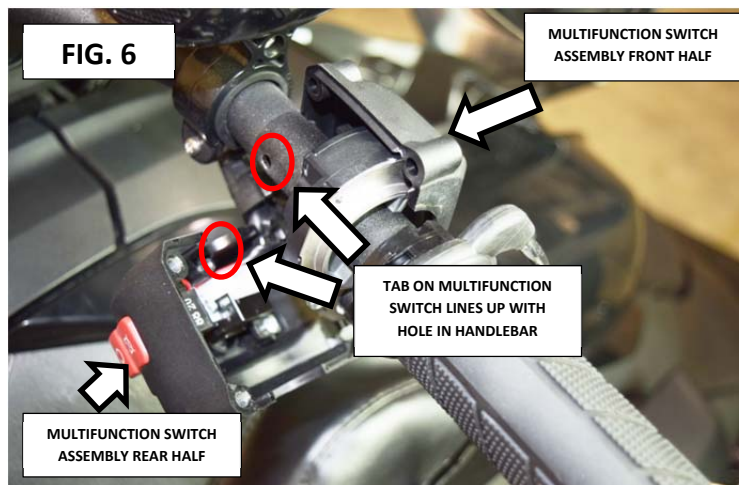
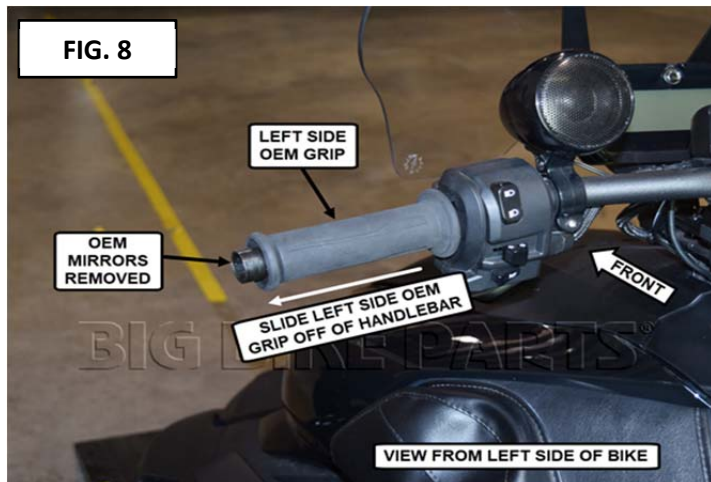


FIG. 6







## WARNING

ALWAYS MAKE SURE THROTTLE ROTATES AND RETURNS BACK TO IDLE POSITION FREELY BEFORE OPERATING VEHICLE. FAILURE TO DO SO CAN RESULT IN INJURY

## NOTICE

IGNORING THE CONTENTS OF THESE INSTRUCTIONS MAY AFFECT THE PRODUCT PERFORMANCE AND FUNCTIONALITY. NOT FOLLOWING THESE INSTRUCTION MAY CAUSE DAMAGE TO THE PRODUCT OR THE VEHICLE TO WHICH IT IS BEING ATTACHED.