

# SHOW CHROME®

Copyright© 2023 by Big Bike Parts, Inc. No part of this instruction sheet may be reproduced without the written permission of Big Bike Parts, Inc.

## INSTALLATION INSTRUCTIONS

PART NO. 41-266

DESCRIPTION: REAR TRUNK SHOCK

ESTIMATED INSTALLATION TIME: 15 TO 30 MIN

FITMENT:

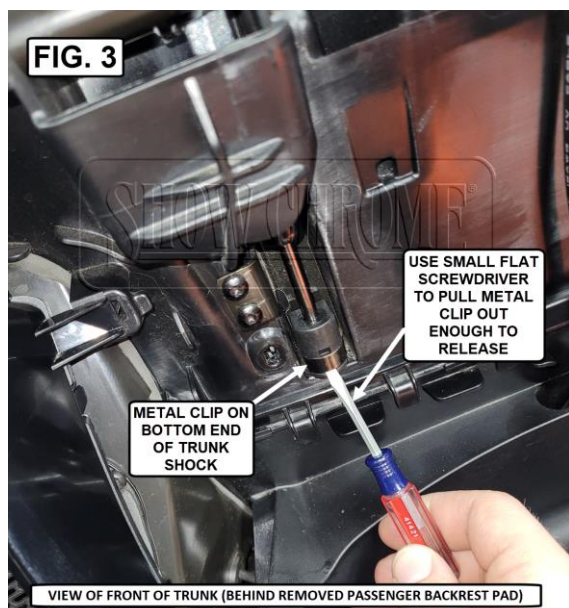
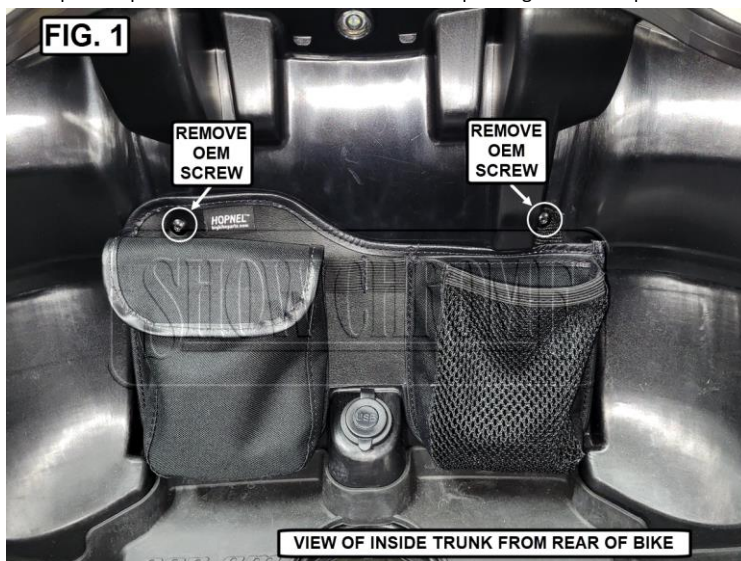
CAN-AM SPYDER 2020+ RT LTD/F3 LTD

TOOLS NEEDED:	SMALL FLAT SCREWDRIVER	T20 TORX	5MM ALLEN WRENCH		
INCLUDED:	14 KG TRUNK SHOCK				
EXTRA ITEMS (NOT NEEDED):	N/A				

PLEASE READ THROUGH AND UNDERSTAND THESE INSTRUCTIONS BEFORE BEGINNING.

### INSTALLATION:

1. Open the trunk lid.
2. From inside the trunk, use a T20 Torx to remove the two screws securing the passenger backrest pad (FIG. 1).
3. Carefully slide the passenger backrest pad straight up to remove it (FIG. 2). Set aside for now.
4. Support the trunk lid. Use a small flat screw driver to release (prying straight out) the metal clip securing the bottom of the OEM trunk shock (FIG. 3).
5. Lift the trunk lid up enough to access the screw securing the top of the trunk shock to the trunk lid hinge. Use a 5MM allen wrench to remove the OEM trunk shock screw and OEM trunk shock (FIG. 4). This screw will be re-used.
6. Using the OEM trunk shock screw removed in step 5 and the new trunk shock, install the new trunk shock onto the trunk lid by reversing step 5. Be sure not to overtighten the OEM trunk shock screw. Tighten until snug but the trunk shock can still move.
7. Connect the bottom end of the new trunk shock to the shock mount by pressing firmly until it snaps completely onto the mount post.
8. Repeat steps 1-3 in reverse order to reinstall the passenger backrest pad.



### NOTICE

IGNORING THE CONTENTS OF THESE INSTRUCTIONS MAY AFFECT THE PRODUCT PERFORMANCE AND FUNCTIONALITY. NOT FOLLOWING THESE INSTRUCTION MAY CAUSE DAMAGE TO THE PRODUCT OR THE VEHICLE TO WHICH IT IS BEING ATTACHED.