

# SHOW CHROME®

Copyright© 2023 by Big Bike Parts, Inc. No part of this instruction sheet may be reproduced without the written permission of Big Bike Parts, Inc.

## INSTALLATION INSTRUCTIONS

PART NO. 41-422, 41-422BK

DESCRIPTION: HIGHWAY MOUNT

ESTIMATED INSTALLATION TIME: 30 TO 45 MIN

FITMENT: CAN-AM RYKER 2019-NEWER

TOOLS NEEDED:	REMOVABLE THREAD LOCK	SIDE CUTTER	PUSH PIN PLIERS	5MM ALLEN	
INCLUDED:	BASE CLAMP (2X)	BASE MOUNT ARM (LEFT AND RIGHT)	M6-1.0 X 25MM SHCS 12.9 (8X)	CABLE TIE	FOAM STRIP
EXTRA ITEMS (NOT NEEDED):					

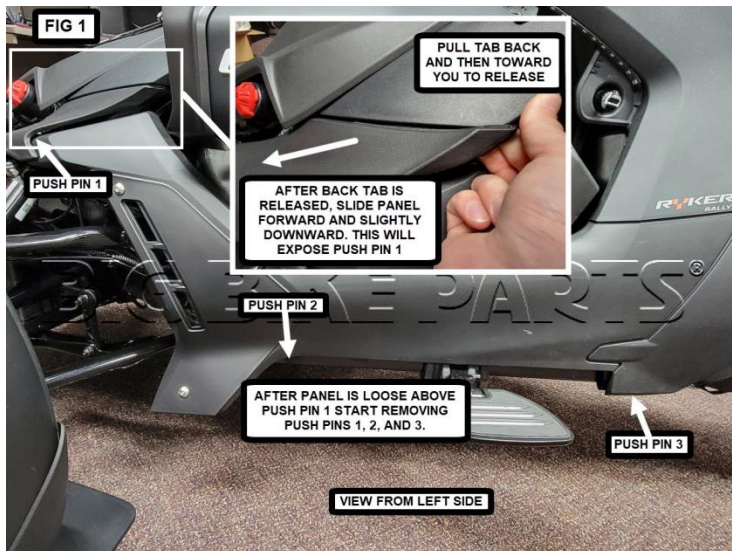
PLEASE READ THROUGH AND UNDERSTAND THESE INSTRUCTIONS BEFORE BEGINNING. \*USE REMOVABLE THREAD LOCK ON ALL FASTENERS\*

### INSTALLATION:

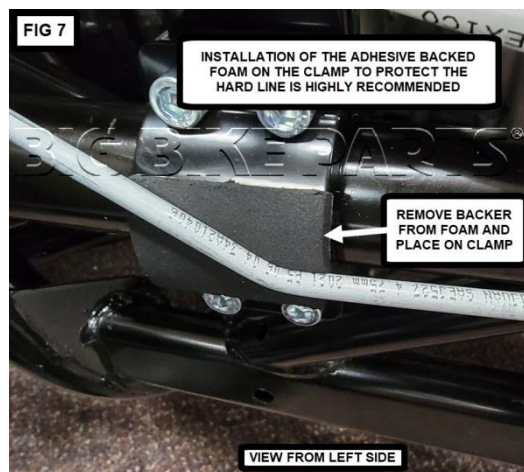
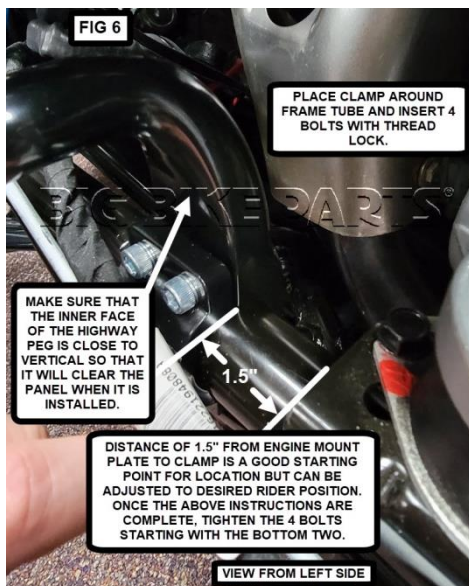
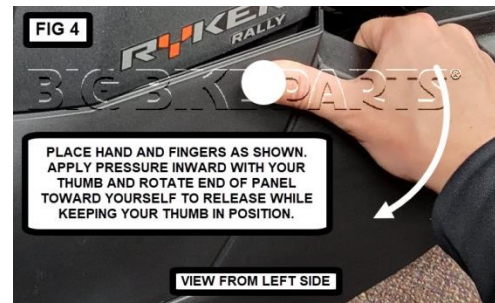
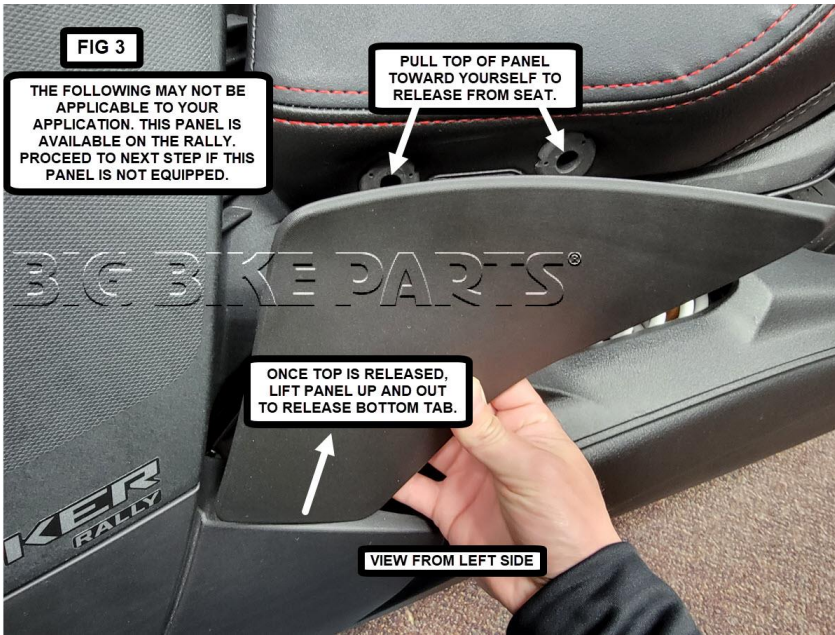
- Starting on the left side, locate and pull the tab back and toward you on the front bumper cover. Slide panel forward and down as shown in **FIG 1** to expose push pin 1.
- Proceed with removing all push pins from locations shown in **FIG 1**.
- With push pin 1 removed, pull panel directly toward you with hand placed as shown in **FIG 2** to release the panel clip holding the panel in place.
- RALLY ONLY:** Remove side filler panel by pulling the top of the panel away from the seat and lifting it up and out from the side panel in **FIG 3**.
- Place hand and fingers as shown in **FIG 4**. Apply pressure inward with your thumb and rotate end of panel toward yourself to release while keeping your thumb in position.
- Slide panel forward to release as shown in **FIG 5**. Remove and place off to the side.
- Following **FIG 6**, place clamp around frame tube and insert 4 bolts with thread lock. Make sure that the inner face of the highway peg is close to vertical so that it will clear the panel when it is installed. Measure 1.5" from engine mount plate to clamp to use as a good starting point for location but can be adjusted to desired rider position. Once the above instructions are complete, tighten the 4 bolts starting with the bottom two.
- Per **FIG 7**, remove the backer from the foam and place on the clamp to protect the hard line from coming into contact with the clamp.
- Moving to the right side, repeat steps 1-6 to remove panels.
- Use flat head screw driver to lift tab and slide connectors in the indicated direction to completely remove from clip as shown in **FIG 8**.
- Following **FIG 9**, slide the locking tab to the end of the plug. Then squeeze the tab as shown in **FIG 10** and disconnect the plug.
- Referring to **FIG 11**, pull the hose and wiring hanger away from the Ryker to create a gap that you can pass the plug and wiring through. This will also create space for the clamp and highway mount to fit properly.
- Reconnect the plug in reverse order of how it was taken apart and use the supplied cable tie to hold the connector joint to the frame as shown in **FIG 12**. This will create clearance to mount the right side highway peg.
- Following **FIG 13**, place clamp around frame tube and insert 4 bolts with thread lock. Make sure that the inner face of the highway peg is close to vertical so that it will clear the panel when it is installed. Measure 1.5" from engine mount plate to clamp to use as a good starting point for location but can be adjusted to desired rider position. Once the above instructions are complete, tighten the 4 bolts starting with the bottom two.
- Sit on the Ryker with highway pegs installed and verify that the riding position feels comfortable.
- Proceed with reinstalling the left and right side panels using steps 1-6 in reverse order.

### OPTIONAL: REVERSE LEVER ADJUSTMENT

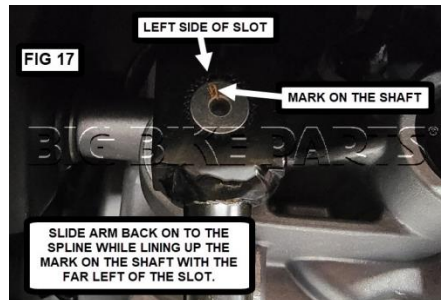
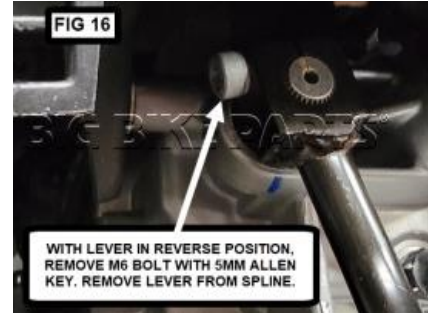
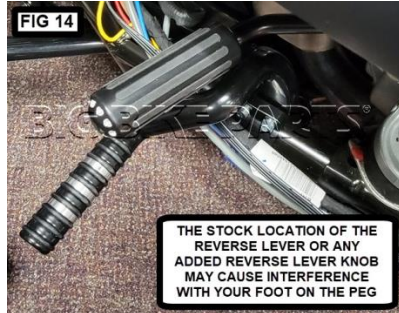
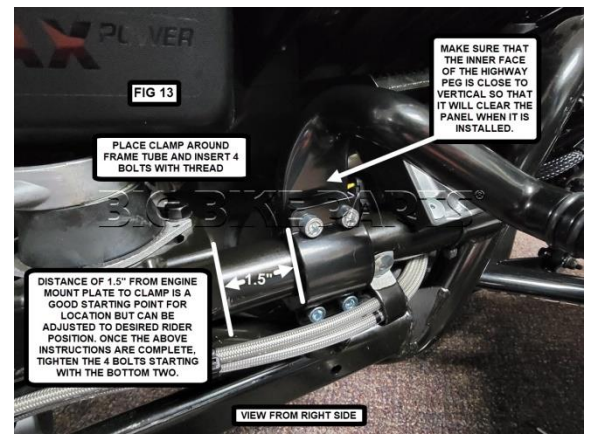
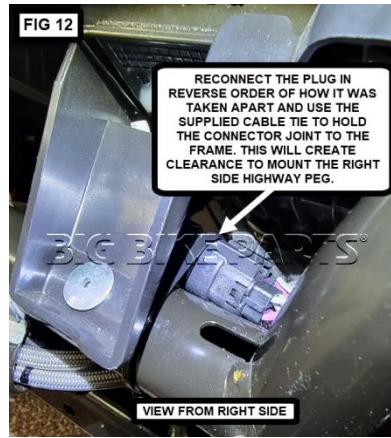
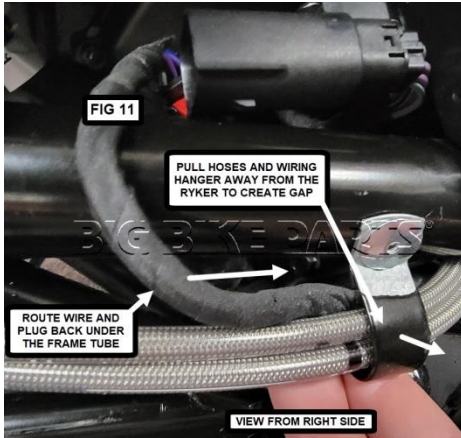
- The stock location of the reverse lever or any added reverse lever knob may cause interference with your foot on the peg (**FIG 14**).
- Locate the two locking clips and release them shown in **FIG 15**. Lift up on the air filter housing to remove from the Ryker.
- With lever in reverse position, remove M6 bolt with 5mm Allen key shown in **FIG 16**. Remove lever from spline.
- Slide arm back on to the spline while lining up the mark on the shaft with the far left of the slot as called out in **FIG 17**.
- FIG 18** shows that there is now more foot clearance after the adjustment has been made.











## WARNING

THREADLOCK CAUSES PLASTICS TO CRACK, BREAK OR BECOME BRITTLE. WHEN USING THREADLOCK TO INSTALL HARDWARE WITH PLASTIC COMPONENTS, ONLY APPLY TO METAL COMPONENTS. IT IS CRITICAL THAT ANY EXCESS THREADLOCKER OR SPILLAGE IS CLEANED COMPLETELY FROM PLASTIC COMPONENTS IMMEDIATELY BEFORE DRYING. A DAMP TOWEL OR RAG IS THE BEST WAY TO ACHIEVE THIS. IF EXCESS THREADLOCKER IS NOT CLEANED UP RIGHT AWAY, IT COULD LEAD TO DAMAGED PRODUCTS AND VOID WARRANTY.

## NOTICE

IGNORING THE CONTENTS OF THESE INSTRUCTIONS MAY AFFECT THE PRODUCT PERFORMANCE AND FUNCTIONALITY. NOT FOLLOWING THESE INSTRUCTION MAY CAUSE DAMAGE TO THE PRODUCT OR THE VEHICLE TO WHICH IT IS BEING ATTACHED.