

# BIG BIKE PARTS® INSTALLATION INSTRUCTIONS

Copyright© 2012 by Big Bike Parts, Inc.  
No part of this instruction sheet may be  
reproduced without the written permission  
of Big Bike Parts, Inc.©

PART NO. WINDSHIELD GARNISH  
52-795 FOR HONDA GL1800  
GOLDWING 2001-2010 & 2012

4/16/2012

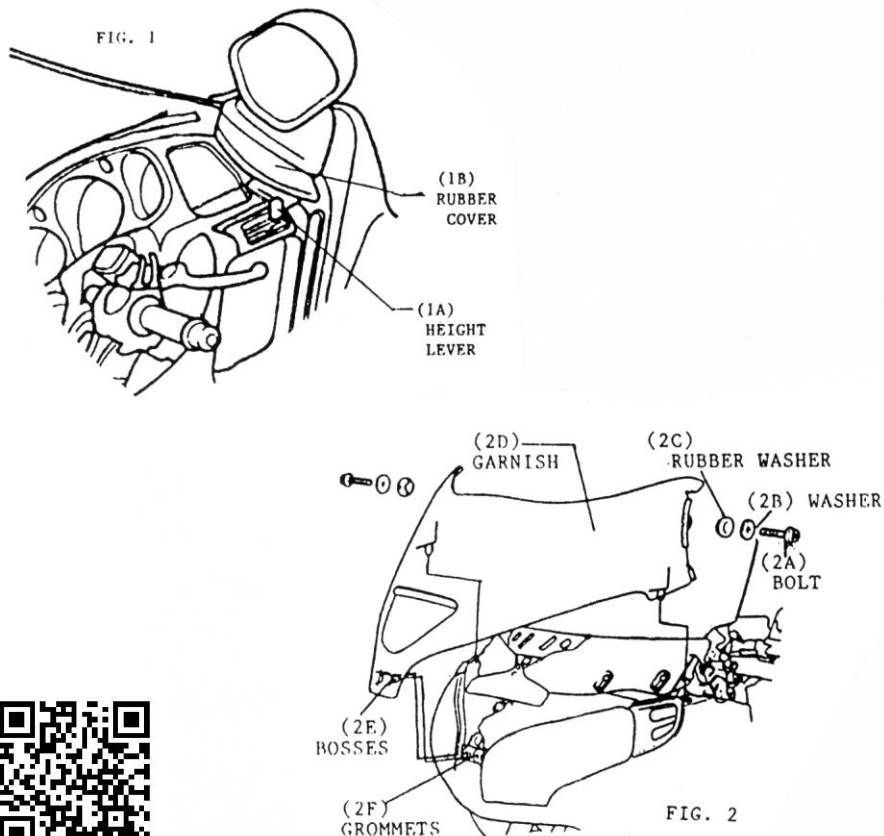
ITEMS REQUIRED: 10MM WRENCH

INSTALLATION:

1. RELEASE THE HEIGHT ADJUSTMENT LEVER (1A) (LEFT & RIGHT).
2. PULL BACK THE RUBBER COVER (1B) OVER LEFT & RIGHT MIRRORS.
3. USING 10MM WRENCH REMOVE THE BOLT (2A), WASHER (2B) AND RUBBER WASHER (2C) ON BOTH SIDES. BE CAREFUL NOT TO DROP ANY OF THE HARDWARE.

**NOTE: THE MIRROR CAN BE TILTED FORWARD TO HELP GAIN ACCESS TO BOLT.**

4. PULL THE OLD WINDSHIELD GARNISH STRAIGHT (2D) OUT TO RELEASE THE BOSSES (2E) FROM THE GROMMETS (2F).
5. INSTALL THE NEW WINDSHIELD GARNISH IN THE REVERSE OF REMOVAL.



# BIG BIKE PARTS® INSTALLATION INSTRUCTIONS

Copyright© 2012 by Big Bike Parts, Inc.  
No part of this instruction sheet may be  
reproduced without the written permission  
of Big Bike Parts, Inc.©

PART NO. WINDSHIELD GARNISH  
52-795 FOR HONDA GL1800  
GOLDWING 2001-2010 & 2012

4/16/2012

ITEMS REQUIRED: 10MM WRENCH

INSTALLATION:

1. RELEASE THE HEIGHT ADJUSTMENT LEVER (1A) (LEFT & RIGHT).
2. PULL BACK THE RUBBER COVER (1B) OVER LEFT & RIGHT MIRRORS.
3. USING 10MM WRENCH REMOVE THE BOLT (2A), WASHER (2B) AND RUBBER WASHER (2C) ON BOTH SIDES. BE CAREFUL NOT TO DROP ANY OF THE HARDWARE.

**NOTE: THE MIRROR CAN BE TILTED FORWARD TO HELP GAIN ACCESS TO BOLT.**

4. PULL THE OLD WINDSHIELD GARNISH STRAIGHT (2D) OUT TO RELEASE THE BOSSES (2E) FROM THE GROMMETS (2F).
5. INSTALL THE NEW WINDSHIELD GARNISH IN THE REVERSE OF REMOVAL

